



# 2010 Acapulco Challenge

## Sailing Instructions

October 29 – 31, 2010



### 1. RULES

- 1.1. All racing will be governed by the *rules* as defined in the current Racing Rules of Sailing.
- 1.2. Competitors encountering non-racing craft shall conform to the Inland Rules of the Road. No racing vessel has rights of way over a large commercial/naval deep draft ships. RRS 60.2, 63.1 and A5 are modified to add that the R/C may directly disqualify a yacht infringing this instruction without a hearing.
- 1.3. NAVAL PROTECTION ZONE: The Naval Protection Zone is a 500 yard regulated area of water surrounding all US Naval Vessels of 100' or more. All vessels within 500 yards of a US Naval Vessel shall operate at the minimum speed necessary to maintain safe course and speed and shall proceed as directed by any official patrol. NO VESSEL IS ALLOWED WITHIN 100 YARDS OF A US NAVAL VESSEL.
- 1.4. For the purpose of the Acapulco Challenge, PHRF of San Diego class rules will apply except as amended by the Notice of Race and these Sailing Instructions.

### 2. NOTICE TO COMPETITORS

- 2.1. A competitor meeting will be held Saturday at 0900 in the Board Room upstairs in the main clubhouse.
- 2.2. Notice to competitors will be posted on the Official Regatta Notice Board located on the east side of the Sailing Center facing the water.

### 3. CHANGES TO THE SAILING INSTRUCTION

Any changes to these sailing instructions will be posted on the official regatta notice board not later than 0900 on each day of racing. At the same time Code Flag L will announce that an amendment to the sailing instructions is available. If more than (1) amendment has been made the Race Committee will hoist L over a numeral pennant (2, 3, 4, etc.) the numeral of the pennant will be the number of the latest amendment. These flags will be accompanied by a sound signal.

### 4. SIGNALS MADE ASHORE

Signals made ashore will be displayed from the SDYC flagpole.

### 5. SIGNALS MADE AFLOAT

- 5.1. When a visual signal is displayed over a class flag (SI 6), the signal applies only to that class. In the absence of any class flags, the signal applies to all classes. (See RRS Race Signals)
- 5.2. In accordance with RRS 90.2 (c), oral changes to the Sailing Instructions may be made on the water. A change is in effect when the RC signal boat displays code flag L over A with one sound signal. This means "Come within hail of the RC Signal Boat to receive oral changes to the Sailing Instructions." The Race Committee may give oral changes to the Sailing Instructions to each boat by VHF or loud hailer and require acknowledgement.
- 5.3. Official communications for the venues will be made on **VHF Ch 69**.

## 6. CLASSES, CLASS FLAGS AND STARTING ORDER

6.1. Starting Order and Class Flags are as follows:

**Div 1** = J 120s AND Ben. 40.7s (pennant #1), **Div 2** = TP52s and 50s (pennant # 2).

6.2. Boats not involved in a starting sequence shall keep clear of the starting area and those boats preparing to start. See RRS 23.1

6.3. Note that there will be a minimum of one minute between the starting signal for a fleet and the warning signal for the next fleet.

## 7. SCHEDULE OF RACES and STARTING AREAS:

7.1. **Friday, October 29:** Boat draw in the SDYC Board Room at 1200 followed as soon as possible by practice racing in the Coronado Roads approx. 2 nm from light Z on Zuniga Jetty on a heading of 130° magnetic.

7.2. **Saturday, October 30:** three races are scheduled in the Coronado Roads, approx. 2 nm from light Z on Zuniga Jetty on a heading of 130° magnetic.

7.3. **Sunday, October 31:** one race is scheduled in San Diego Bay, beginning approx. 0.25 nm from the east end of Harbor Island.

7.4. The warning signal for the first race Sat. will be at 1130 and on Sun. the first warning signal will be at 1300.

## 8. CHECK IN

Prior to the warning for the first race each day, each yacht shall check-in with, and be recognized by, the Race Committee (R/C) located on a vessel near the leeward end starting mark "S" and displaying the Code Flag "L," by passing close aboard, on starboard tack and hailing her sail number. When a yacht has been recognized, the R/C will hail the yachts sail number.

## 9. THE COURSE

9.1. The course will be selected from the attached Course Description. This illustration shows the courses, the order in which the marks are to be rounded and passed and the side on which each mark is to be left.

9.2. Course signals from the R/C vessel at the starboard end of the starting line are as follows:

The number of the course to be sailed will be signaled using placards.

The approximate bearing to the weather mark will be signaled using placards.

The approximate distance from the start line to Mark 1 will be signaled using placards.

**NOTE:** Classes on the same venue *will* have different marks, bearings to the weather mark and/or different number of roundings. Read your course boards.

## 10. MARKS

10.1. **Saturday Venue (Coronado Roads)** marks will be as follows:

Mark 1 and 2 will be YELLOW CONES.

Mark 1a will be YELLOW CONE w/ black cap.

New mark 1 and 2, as prescribed in SI 14, will be ORANGE TETRAHEDRONS.

New mark 1a will be ORANGE TETRAHERON w/ black cap.

Mark S will be a YELLOW CYLINDER.

Mark F will be a SMALL ORANGE TETRAHEDRON.

10.2 **Sunday Venue (San Diego Bay)** marks will be as follows:

Mark 1, and 2 will be YELLOW CONES.

Mark S will be a YELLOW CYLINDER.

## 11. THE START

11.1. The starting line will be between a staff with an orange flag displayed on the R/C vessel at the starboard end of the starting line and Mark "S" on the port end.

**12. RECALLS**

- 12.1. As a courtesy, the Race Committee will attempt to hail boats "On Course Side" (OCS) as soon as possible after the start. Boats will be hailed as such on VHF radio channel **69**.
- 12.2. Failure of electronic equipment, failure to hear a hail, order of hail, or delay in hailing will not be grounds for redress. This modifies RRS 62.1 (a).

**13. CHANGE OF THE NEXT LEG OF THE COURSE**

To change the next leg of the course, the Race Committee will lay a *new* mark (or move the finishing line) and remove the original mark as soon as practicable. When in a subsequent change a new mark is replaced, it will be replaced by an original mark.

**14. THE FINISH**

The finish line will be between a staff displaying an orange flag on R/C vessel and Mark "F" as described in Instruction 10.1 for Saturday and SD 17 for Sunday.

**15. PENALTIES**

The Two Turns Penalty is modified by replacing same with a One Turn Penalty to include one tack and one gybe. *This modifies RRS 44.2.*

**16. TIME LIMIT**

- 16.1. On Saturday, the time limit is 1600. If no boat in a class has finished the race in progress by the time limit, the race for that class will be abandoned. After the first boat in a class sails the course and finishes within the time limit, succeeding boats in that class who fail to finish by 1630 will be scored Did Not Finish (DNF). This changes Rules 35, A4 & A5.
- 16.2. On Sunday, the time limit is 1600. If no boat in a class has finished the race in progress by the time limit, the race for that class will be abandoned. After the first boat in a class sails the course and finishes within the time limit, succeeding boats in that class who fail to finish by 1630 will be scored Did Not Finish (DNF). This changes Rules 35, A4 & A5.

**17. PROTESTS**

- 17.1. A boat intending to protest about an incident that occurs in the racing area shall notify the race committee finish boat of her intention, including the sail number of the boat(s) being protested. This shall be done after finishing or retiring. This changes RRS 61.1(a).
- 17.2. Protests shall be in writing. Forms are available under the Official Regatta Notice Board, and must be delivered to the RC boat (C-71) within 1 hour after the RC boat docks.
- 17.3. Docking times and protest time limit for each venue will be posted on the Official Regatta Notice Board.
- 17.4. A list of protests, hearing times, and disposition will be posted on the Official Regatta Notice Board.

**18. WITHDRAWAL**

- 18.1. A boat intending to withdraw from racing shall attempt to notify the RC of her withdrawal by VHF channel 69 or hail before leaving the race area, and if not successful, shall notify the Security Gate of SDYC (619-758-6322) as soon as possible.

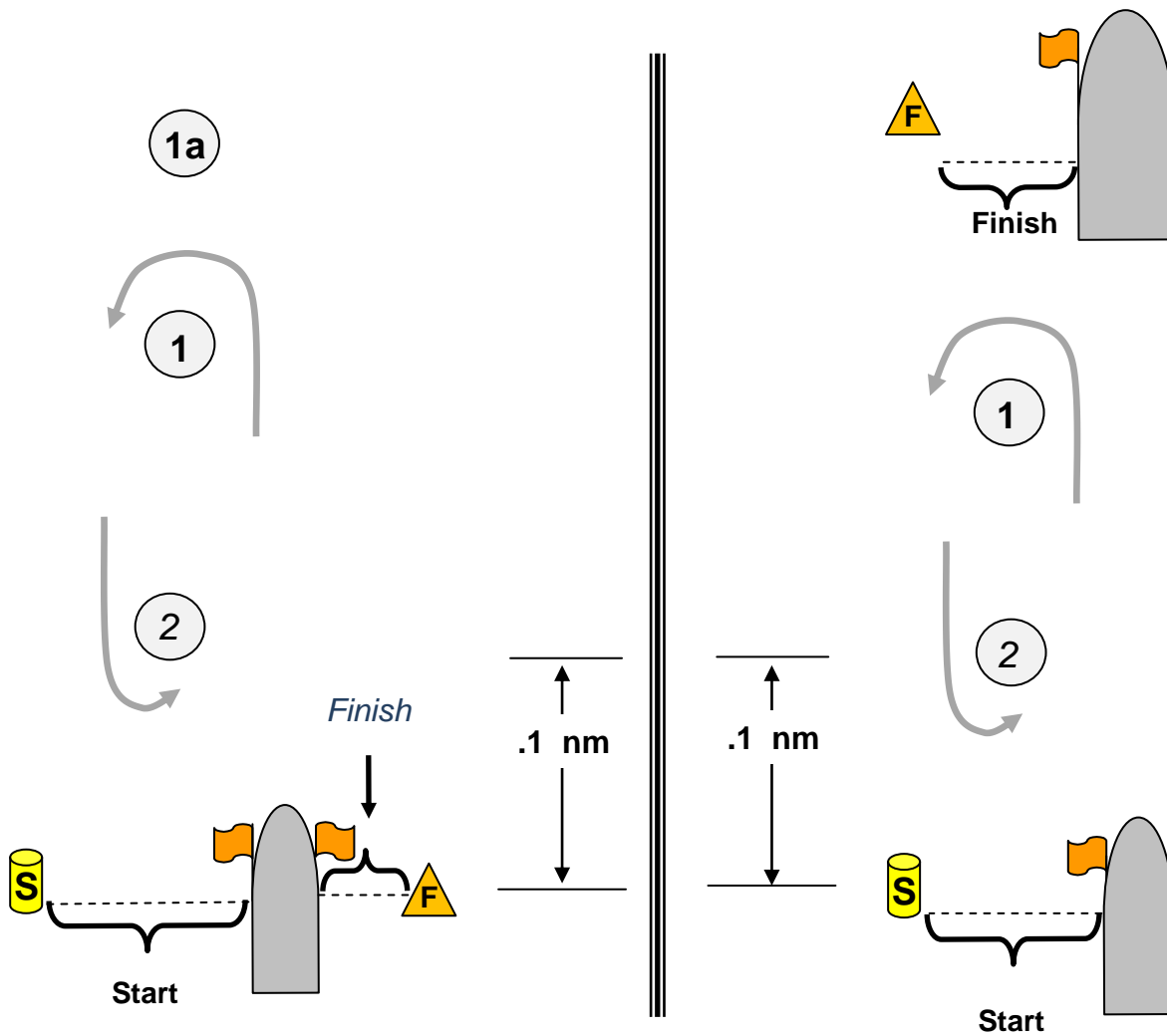
**19. SCORING AND TROPHIES**

- 19.1. Three races are scheduled for Saturday and one race is scheduled for Sunday. No races will be excluded.
- 19.2. One completed race will constitute a series.
- 19.3. Handicap scoring for PHRF will be time on distance.
- 19.4. Scoring will be in pairs (SDYC/CYA) with one point to the winning boat in each pair in each race. Club with highest points after all the races wins the Challenge.
- 19.5. Trophies will be awarded as soon as possible after the conclusion of racing on Sunday.

# Saturday Course Chart

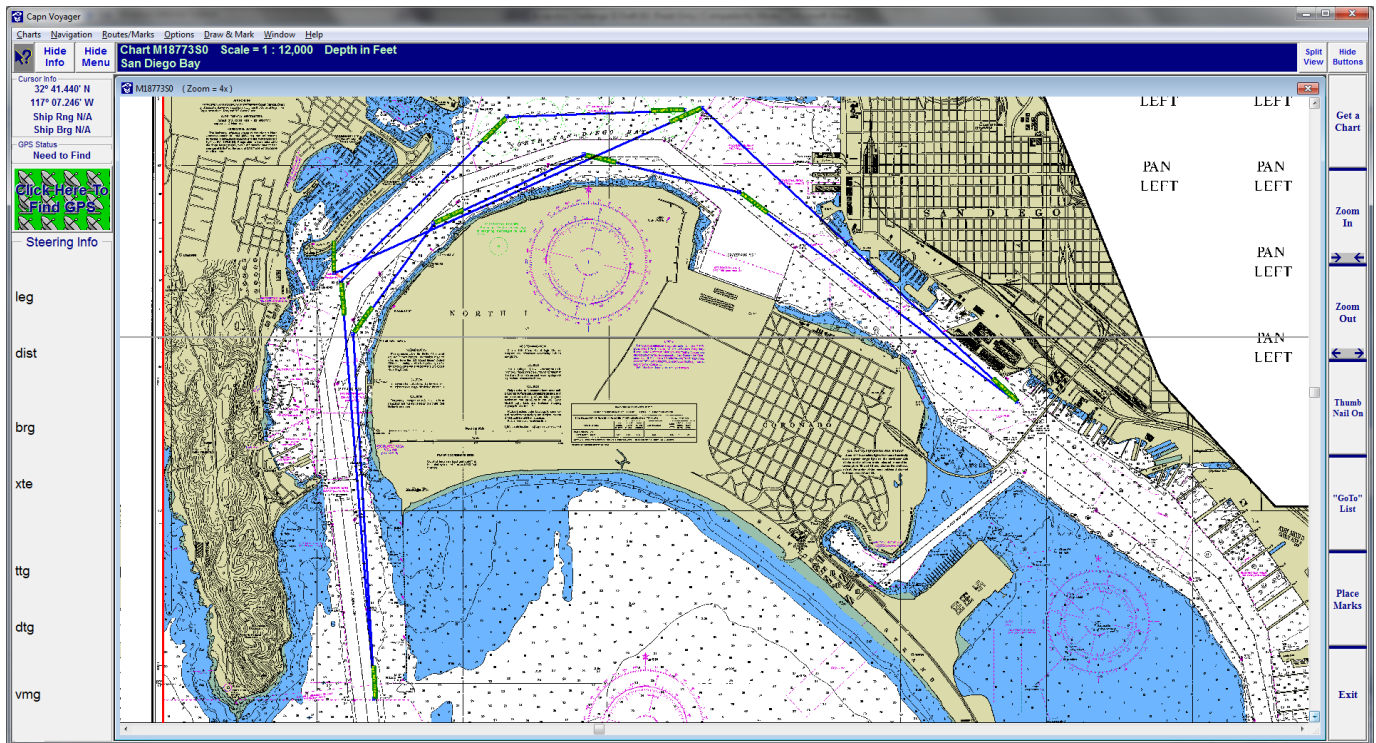
Course	Marks	Course	Marks
2	S, 1a, 2, 1a, Finish		
4	S, 1, 2, 1, Finish	3	S, 1, 2, Finish
6	S, 1, 2, 1, 2, 1, Finish	5	S, 1, 2, 1, 2, Finish
8	S, 1a, 2, 1a, 2, 1a, Finish	7	S, 1, 2, 1, 2, 1, 2, Finish

Reference Sailing Instruction 10 (Mark Configurations) for course variables.



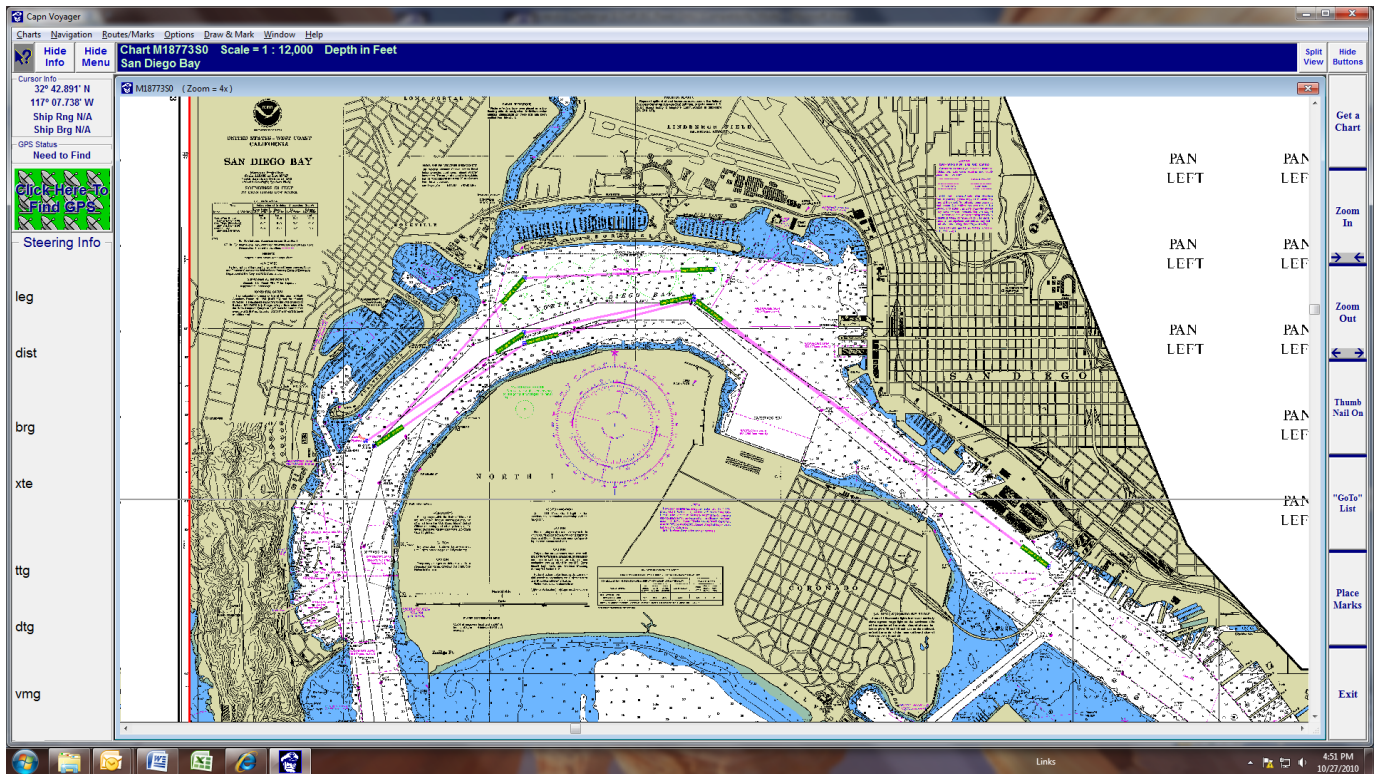
# Sunday – Course 1 - Distance = 16.5 nm

Start @ East end of Harbor Island – Mark 1, SD 17 to port, SD 8 to port, Mark 2 to port, FM 19 (mooring buoy) to port, Finish at 17.



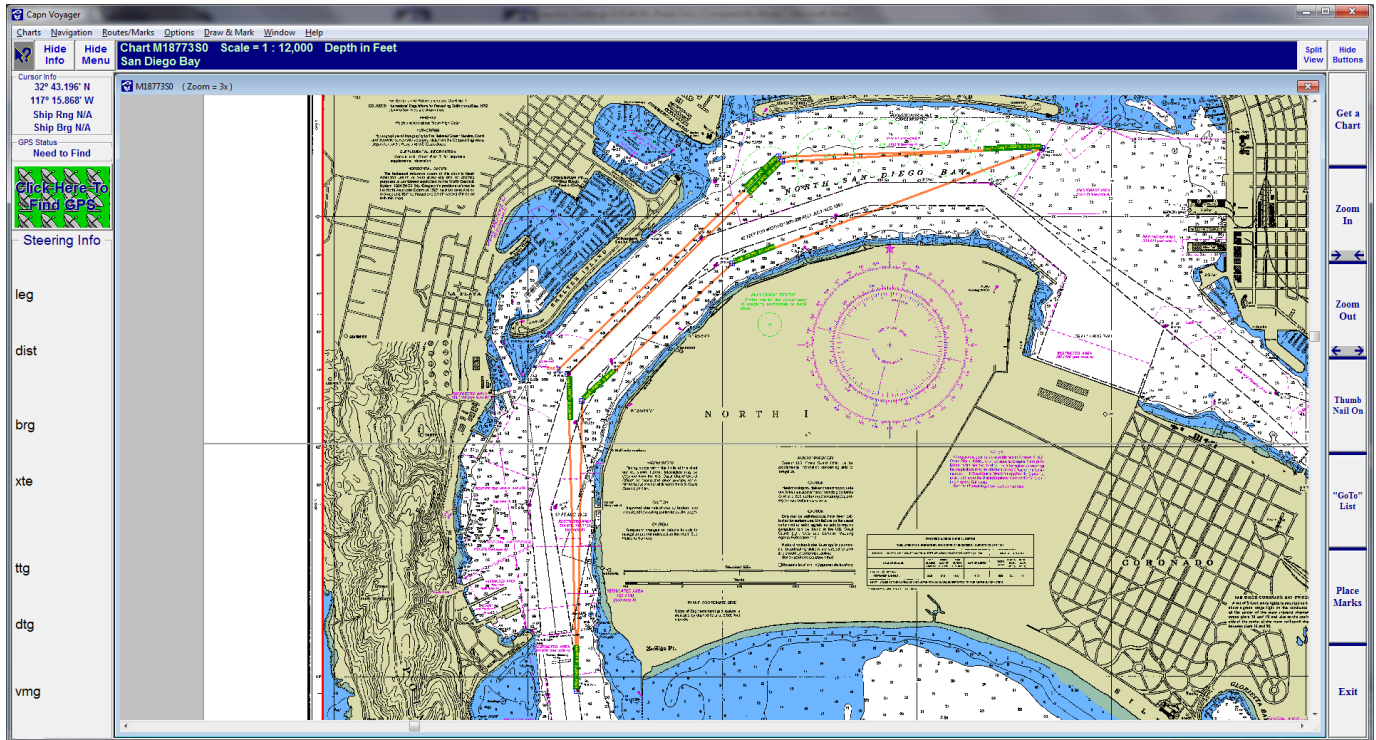
# Sunday - Course 2 - Distance = 11.8 nm

Start @ East end of Harbor Island – Mark 1, SD 17 to port, SD 21 to starboard, Mark 2 to port, SD 21 to port, Finish at 17.



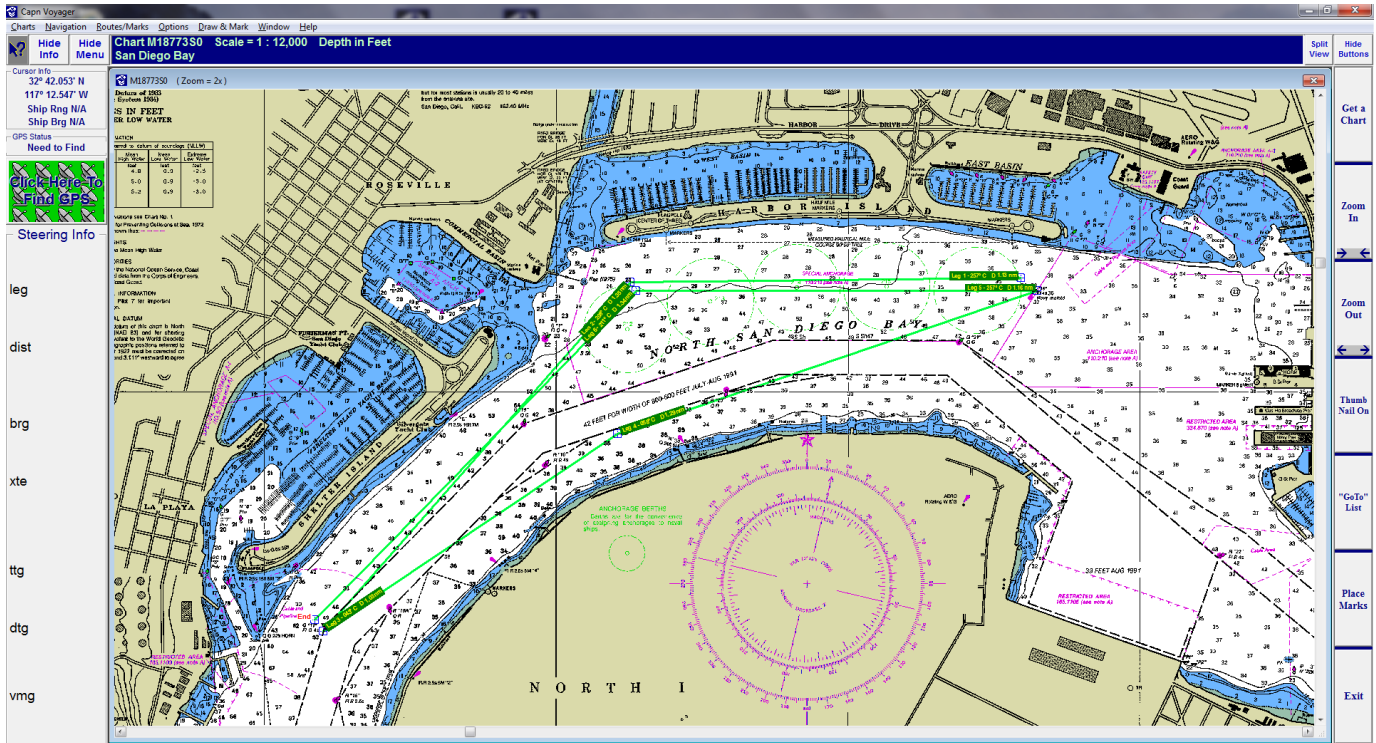
# Sunday Course 3 - Distance = 9.8 nm

Start @ East end of Harbor Island – Mark 1, SD 17 to port, SD 10 to port, FM 19 (mooring buoy) to port, Mark 1 to port, Finish at 17.



# Sunday Course 4 - Distance = 7.3 nm

Start @ East end of Harbor Island – Mark 1, SD 17 to port, FM 19 (mooring buoy) to starboard, Mark 1 to port, Finish at 17.



San Diego Yacht Club Acapulco Challenge Race Courses:

*Approximate buoy locations*

